

MICROZONATION STUDY OF SOUTH EUROPEAN SIDE OF İSTANBUL

1-AIM AND SCOPE

This report explains the content, methods and results of the “Preparation of Microzonation Reports and Maps – European Side (South)” prepared by OYO International Corporation and submitted to Istanbul Metropolitan Municipality (IMM). (hereinafter referred to as "study")

1.1 Purpose of Study

The aim of the study is to determine the potential risks against earthquakes of areas with different engineering and geological features and to prepare microzonation reports and maps, which can be a basis for "hazard-related land use management and city planning" within the boundaries of Istanbul Metropolitan Municipality. In this study:

- Creating a base for plans of all types and sizes.
- Providing data to urban transformation projects
- Building a base for mitigation plans
- To create a database for major investments (dam, tunnel, subway, etc.) and general project design of engineering structures and regulations such as insurance and the like. In this study, detailed geological, geophysical, geotechnical and seismological studies and studies were carried out in order to obtain possible earthquake effects.

1.2 Scope of the Study

The flowchart of the whole work is shown in Fig. 1.2.1. is also shown:

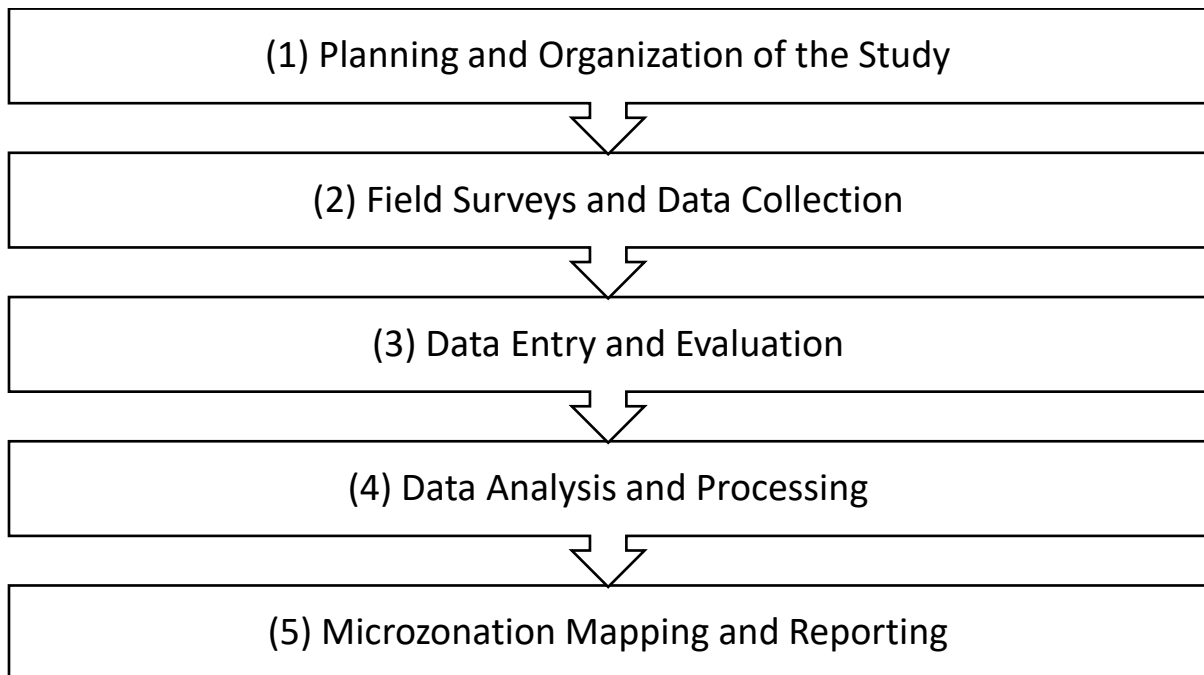


Fig. 1.2.1 Working Flow Chart

1.3 Organization of Work

Work organization is shown in Fig. 1.3.1.:

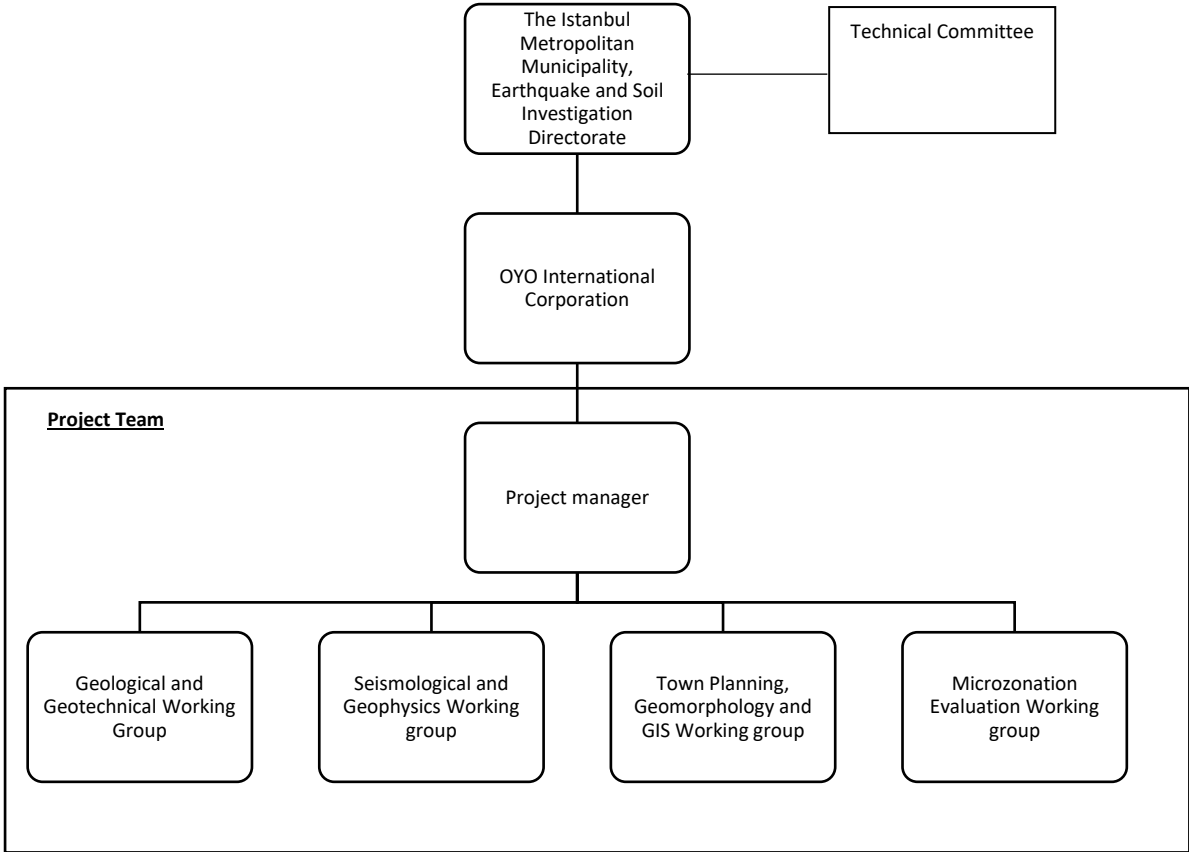


Fig. 1.3.1 Work Organization

2-INTRODUCTION OF THE WORKING AREA AND WORKING METHODS

2.1 Location of the Study Area

The location of the working area is shown in Fig. 2.1.1.



Fig. 2.1.1 Location of the Study Area

The Survey area shown in fig. 2.1.2 is the piece of land surrounded by the following coordinates:

- | | |
|----------------------------------|----------------------------------|
| 1) X: 388,598.72 Y: 4,547,051.31 | 2) X: 388,430.19 Y: 4,535,945.17 |
| 3) X: 407,375.58 Y: 4,535,681.75 | 4) X: 415,860.39 Y: 4,541,134.16 |
| 5) X: 415,892.19 Y: 4,543,910.66 | 6) X: 411,720.15 Y: 4,546,736.56 |

The total area is about 182 km².

The working range is from 18.01.2006 to 19.10.2007 and this final report was prepared in October 2007.

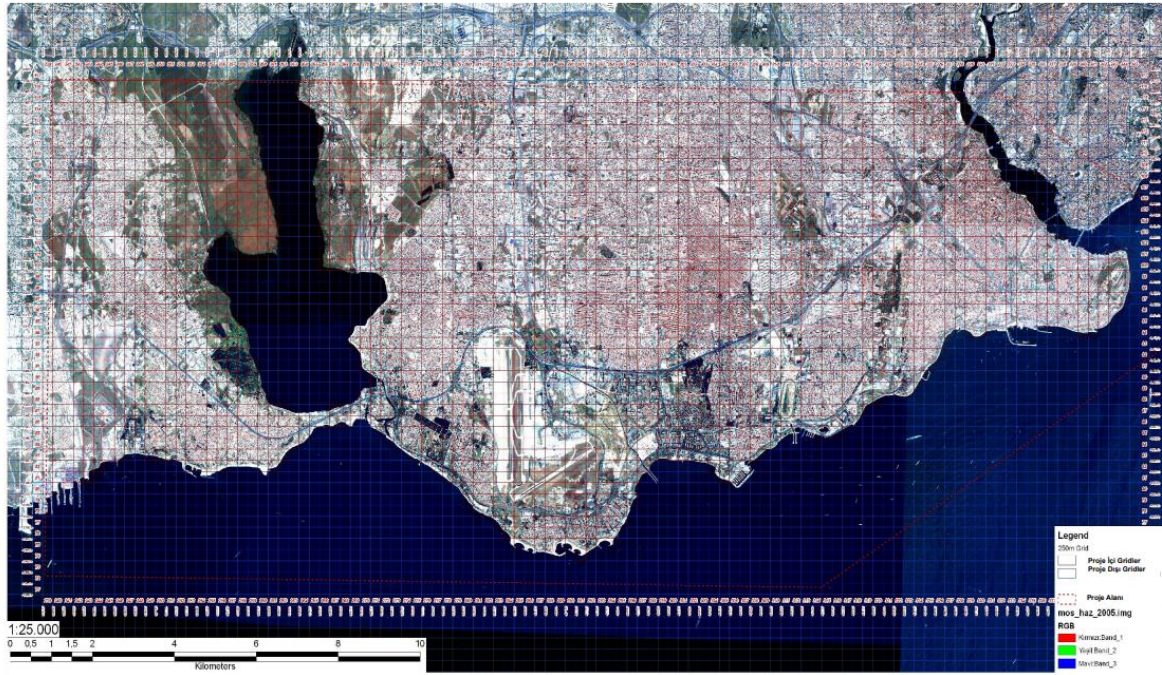


Fig. 2.1.1.2 Study Area Grid Map (250 x 250 m. European Side (South), İstanbul)